

PLATE MOUNTED AXIAL FLOW FANS

HXM Series



HXM



Description

Range of plate mounted axial fans, suitable for many ventilation applications where the extraction of small air volumes at low pressures are required.

Applications

The HXM range are designed to be installed directly into walls or panels and are suitable for use within a wide range of general ventilation applications.

- Applications include the ventilation of:
 - Cafes, bars and small restaurants.
 - Commercial premises.
 - Small workshops.

Construction

Mounting Plate

All HXM Plate Mounted Axial Fans include a one piece bell mouth inlet and mounting plate manufactured from pressed galvanised steel. This mounting plate assembly is protected by a two stage cataforesis primer and tough beige polyester paint finish.

Motor Support

The motor and fan impeller are firmly supported within the mounting plate by a strong steel support frame. The support frame is welded to the mounting plate on models 200, 250 and 300; and bolted to the mounting plate on models 350 & 400. All models include a steel finger proof guard as standard

mounted to the inlet side of the fan. Both the motor support and finger guard are protected by a two stage cataforesis primer and tough beige color polyester paint finish.

Impeller

All models incorporate a five blade impeller manufactured from galvanised steel sheet and finished with a black epoxy-polyester paint. The impellers are factory matched and balanced onto the corresponding motors.

Motor

All models incorporate single phase shaded pole asynchronous induction motors with squirrel cage rotor in die cast aluminium.

Manufactured in accordance with IEC 34-1 standard. The following specifications apply.

- Electrical Supply - 230V 50Hz.
- IP-40 for models 200, 250, 300 and 350, and IP-20 protection for model 400.
- All models incorporate Class B Insulation.
- All models incorporate an Auto-Reset Thermal Overload Protection device.

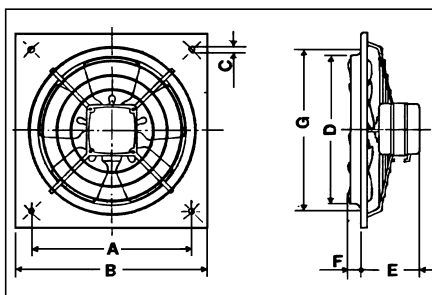
All motors are finished in a beige epoxy-polyester paint coating to complement the mounting plate and motor supports.

All models are supplied with a flexible cable for connection to the electrical supply.

Technical characteristics

Type	Speed (r.p.m.)	Maximum power absorbed (W)	Maximum current absorbed (A)	Maximum air volume (m ³ /h)	Sound pressure level (dB(A))	Weight (kg)
HXM-200	1300	32	0,22	500	36	1,7
HXM-250	1300	46	0,31	900	42	2,5
HXM-300	1300	55	0,40	1400	48	3,1
HXM-350	1300	65	0,50	1800	53	4,4
HXM-400	1300	200	1,60	3000	57	7,3

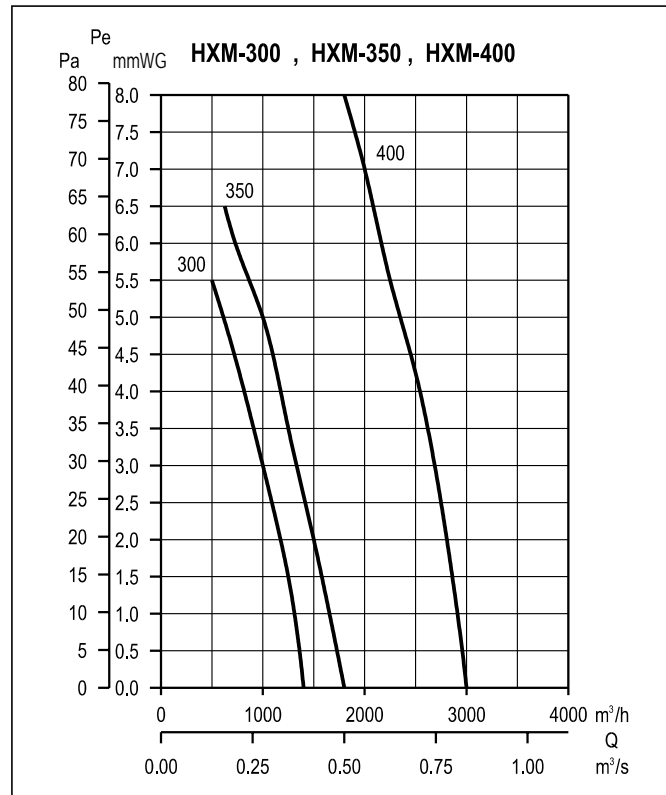
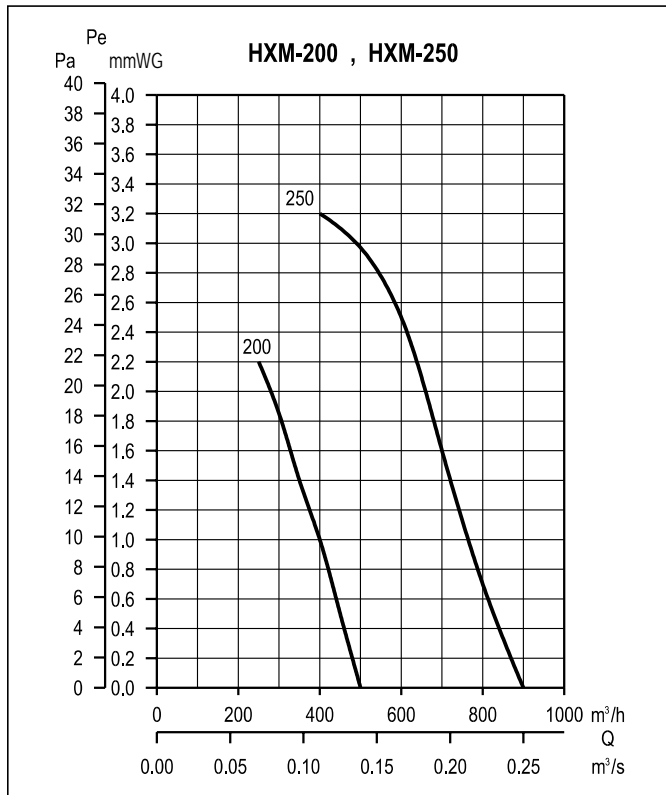
Dimensions (mm)



Type	∅ A	∅ B	∅ C	∅ D	E	F	∅ G
HXM-200	222	266	9	205	85,5	19	211
HXM-250	275,5	333	9	255	92,5	31	261
HXM-300	336,5	400	10,5	305	92,5	35,5	311
HXM-350	390	465	10,5	361	105,5	34,5	371
HXM-400	420	500	10	400	141	52	414

Performance curves

- Q = Air volume in, m³/hr and m³/s
- Pe = Static pressure in mmWG and Pa.
- Dry air at 20 °C and 760 mmHg.
- Air flow data in accordance with the following standards: UNE 100-212-89, BS 848, Part 1, AMCA 210-85 and ASHRAE 51-1985.



HXM

Plate mounted axial flow fans

Mounting accessories



Type	Back draft Louvre Shutters	
	Plastic	Metal
HXM-200	PER - 200 W	PER - 250 CN
HXM-250	PER - 250 W	PER - 250 CN
HXM-300	PER - 355 W	PER - 355 CN
HXM-350	PER - 355 W	PER - 355 CN
HXM-400	PER - 400 W	PER - 400 CN

Electrical accessories



REB
Electronic, single phase speed controller.
See Accessories pages for further details.



RMB
Auto transformer, single phase speed controller.
See Accessories pages for further details.